

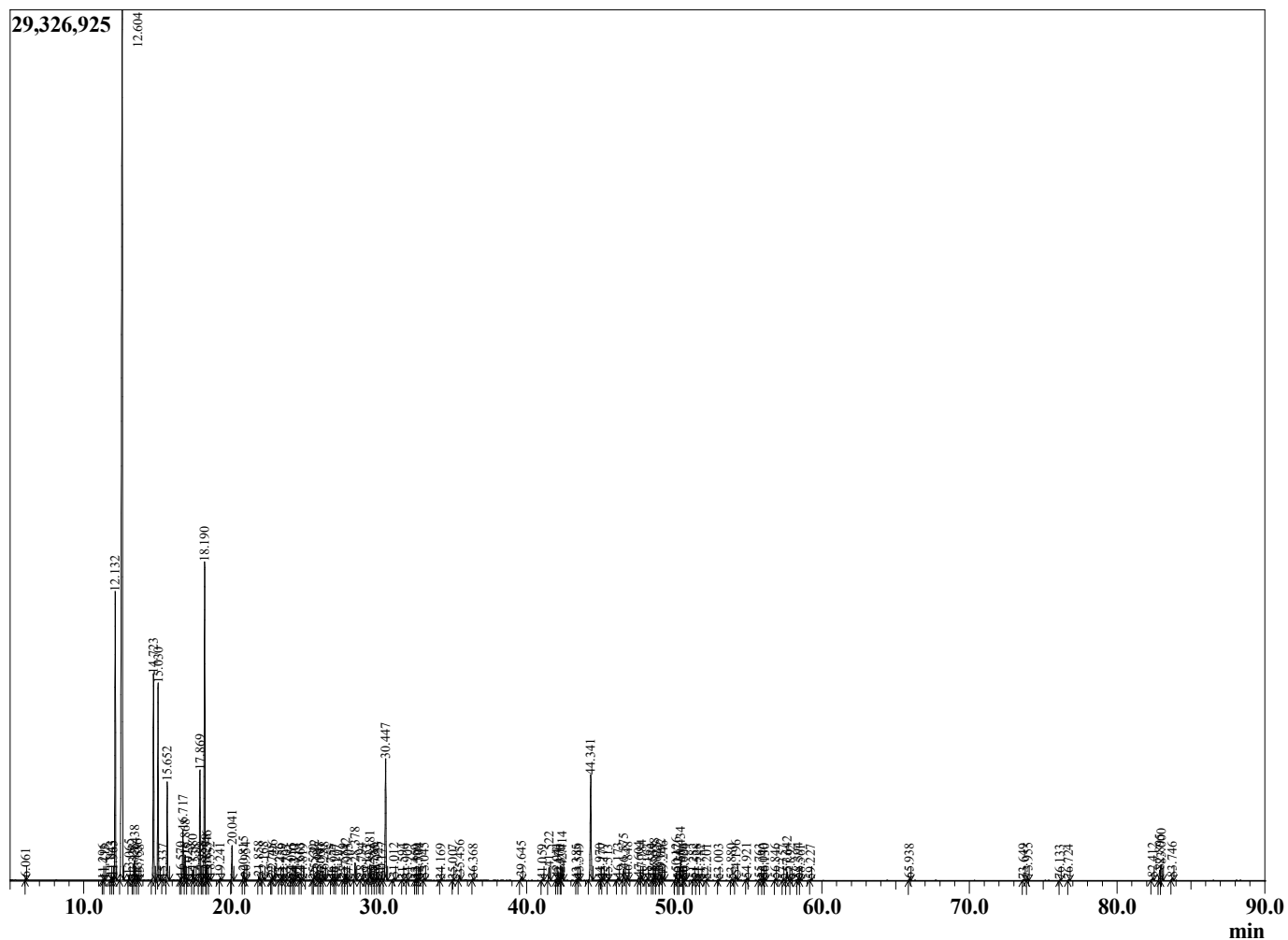
Sample Information

Sample Type : Essential Oil
 Sample Name : Boswellia carterii
 Injection : 0.10
 Volume :

Frankincense Carterii Premium
 Lot# SOR8-RH
 Country: Somalia



Chromatogram Boswellia carterii



R.Time	Name	Area%
6.061	Toluene	0.04
11.296	2,6-Dimethyl 4-octene	0.02
11.413	Dihydromyrcene	0.01
11.843	Hashishene	0.09
11.965	Tricyclene	0.08
12.132	alpha-Thujene	8.28
12.604	alpha-Pinene	38.14
13.065	Thuja-2,4(10)diene isomer	0.13
13.338	alpha-Fenchene	0.03
13.438	Camphene	0.53
13.636	Thuja-2,4(10)-diene	0.14
13.758	Camphene isomer	0.01
14.723	Sabinene	6.05
15.030	beta-Pinene	5.71
15.337	Camphene isomer	0.02
15.652	Myrcene	2.83
16.570	Pseudolimonene	0.08
16.717	alpha-Phellandrene	1.55
16.868	delta-3-Carene	0.73
17.025	Hexyl acetate	0.02
17.380	alpha-Terpinene	0.30
17.538	ortho-Cymene	0.02
17.869	para-Cymene	3.29
17.988	Unidentified	0.06
18.190	Limonene	10.63
18.278	beta-Phellandrene	0.25
18.346	1,8-Cineole	0.39
18.552	cis-beta-Ocimene	0.09
19.241	trans-beta-Ocimene	0.06
20.041	gamma-Terpinene	1.08
20.815	1-Octanol	0.29
20.954	Pinol	0.07
21.858	Terpinolene	0.11
22.168	para-Cymenene	0.10
22.745	Perillene	0.03
22.796	Linalool	0.16
23.256	Solusterol	0.02
23.459	Unidentified	0.02
23.705	Unidentified	0.01
24.055	beta-Thujone	0.07
24.210	Myrcenol	0.02
24.310	trans-para-Mentha-2,8-dienol	0.01
24.663	alpha-Campholenal	0.07
24.819	Unidentified	0.03
25.530	trans-Sabinol	0.01
25.622	trans-Pinocarveol	0.18
25.947	trans-Verbenol	0.10
26.050	Unidentified	0.01
26.288	alpha-Phellandrene-8-ol	0.10
26.755	Sabina ketone	0.01
26.977	trans-Pinocamphone	0.02
27.107	Unidentified	0.01
27.589	Unidentified	0.05
27.742	para-Mentha-1,5-dien-8-ol	0.22
27.905	Unidentified	0.02
28.378	Terpinen-4-ol	0.60

R.Time	Name	Area%
28.794	para-Cymen-8-ol	0.06
29.153	Unidentified	0.01
29.381	alpha-Terpineol	0.57
29.586	Anethole	0.08
29.735	Unidentified	0.01
29.923	alpha-Phellandrene epoxide	0.09
30.177	Verbenone	0.11
30.447	Octyl acetate	4.34
31.012	trans-Carveol	0.09
31.594	Decyl methyl ether	0.03
31.909	cis-Carveol	0.03
32.459	Unidentified	0.01
32.599	Cuminal	0.02
32.704	Carvone	0.05
33.045	Carvotanacetone	0.07
34.169	3,5-Dimethoxytoluene	0.02
35.007	Phellandral	0.01
35.456	Bornyl acetate	0.17
36.368	Carvacrol	0.04
39.645	alpha-Cubebene	0.14
41.059	Cyclosativene	0.03
41.522	alpha-Copaene	0.51
42.041	beta-Bourbonene	0.09
42.170	Hexyl hexanoate	0.02
42.305	Unidentified	0.01
42.414	beta-Elementene	0.50
43.385	cis-beta-Caryophyllene	0.02
43.549	alpha-Gurjunene	0.04
44.341	trans-beta-Caryophyllene	4.17
44.970	beta-Copaene	0.02
45.177	trans-alpha-Bergamotene	0.06
45.513	Aromadendrene	0.01
46.173	Cadina-3,5-diene	0.08
46.575	alpha-Humulene	0.43
46.848	Alloaromadendrene	0.10
47.604	Cadina-1(6),4-diene	0.13
47.784	gamma-Murolene	0.18
48.163	Germacrene D	0.05
48.539	delta-Selinene	0.05
48.658	beta-Selinene	0.27
48.825	gamma-Amorphene	0.10
49.092	alpha-Selinene	0.23
49.246	alpha-Murolene	0.12
50.126	gamma-Cadinene	0.29
50.247	Cubebol	0.02
50.434	delta-Cadinene	0.75
50.626	trans-Calamenene	0.02
50.704	Zonarene	0.04
51.282	trans-Cadina-1,4-diene	0.05
51.528	alpha-Cadinene	0.03
51.782	alpha-Calacorene	0.02
52.201	alpha-Elementol	0.02
53.003	Unidentified	0.03
53.880	Spathulenol	0.03
54.196	Caryophyllene oxide	0.18
54.921	Viridiflorol	0.07
55.763	Copaborneol	0.06
56.040	Eudesmol analogue	0.06
56.130	1,10-di-epi-Cubenol	0.04
56.846	Epicubenol	0.04
57.357	Caryophylla-4(12),8(13)-dien-5-beta-ol	0.01
57.642	tau-Cadinol	0.37

R.Time	Name	Area%
57.892	alpha-Cadinol	0.02
58.394	Unidentified	0.09
58.561	Pogostol	0.02
59.227	14-Hydroxy-9-epi-Z-Caryophyllene	0.02
65.938	Phellandrene dimer	0.05
73.649	meta-Camphorene	0.04
73.955	Neocembrene	0.08
76.133	Unidentified	0.01
76.724	Unidentified	0.03
82.412	Cembrenol	0.09
82.895	Incensole	0.45
83.000	Serratol	0.68
83.746	Incensole acetate	0.10
		100.00